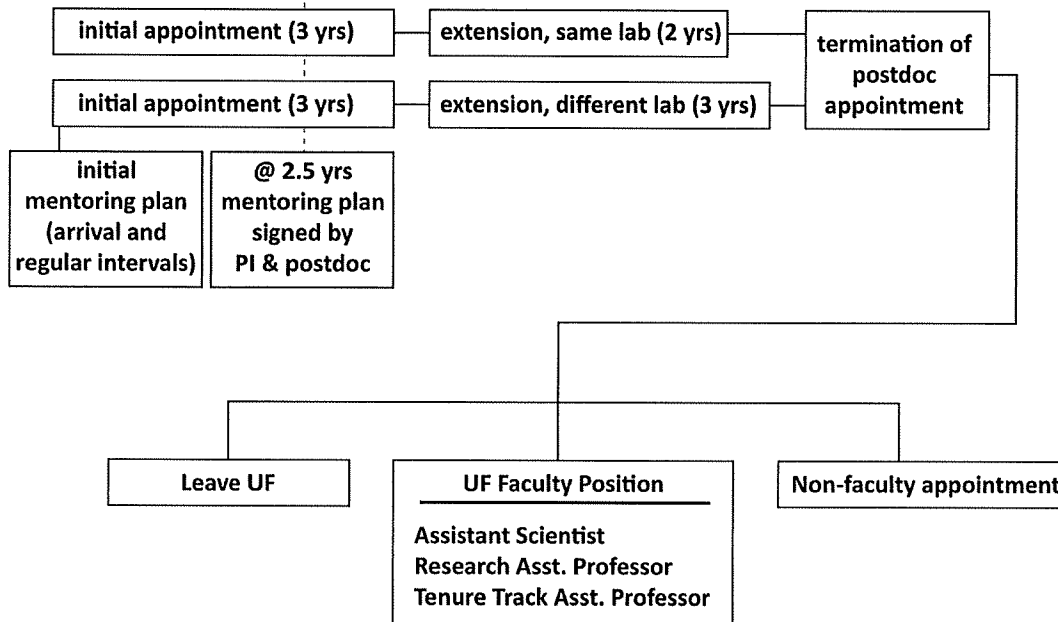


Postdoc Career Guide - College of Medicine



The length of a postdoctoral trainee's stay at the University of Florida (UF) is modeled after a 3 to 5-year plan. The general goal is to design a postdoctoral experience, which allows individuals to train at UF in positions that encourage career development, thus postdocs should not remain at UF in temporary positions for an excessively long period of time.

Postdoctoral trainees will be hired via an initial appointment, which has a typical duration of 3 years. We encourage the mentors and trainees to meet regularly during the first years of employment to specifically discuss the career path of the postdoctoral trainee. At the 2.5-year mark of the initial appointment an official mentoring plan (signed by both the PI and postdoctoral trainee) will be required to be submitted to the Office of Research Affairs. This document will include the plans for years 3-5 as well as general information pertaining to the mentoring activities and postdoc accomplishment and progress along a career path. If the trainee wishes to position herself/himself for a faculty position at UF, guidelines and goals should be discussed at this time. Additionally, if the postdoctoral trainee intends to pursue a faculty position in the future, any requisite immigration arrangements should be started at this point. At the end of the 3-year appointment, there are three options: 1) the postdoctoral trainee can leave UF, 2) the postdoctoral trainee can apply for an extension in the same lab (maximum of 2 additional years with thorough justification), or 3) the post doctoral trainee can apply to study a different discipline in a different lab (maximum of 3 years). It should be made clear to the trainees that at the end of the 5 year period (in same lab) or 6 year period (distributed in two labs) the postdoctoral training period is concluded.

Upon completion of the extension or 2nd post doctoral appointment, postdoctoral trainees have two options: 1) They may choose to pursue interests outside UF or 2) if openings are available, they are eligible to apply for faculty positions or other University positions.